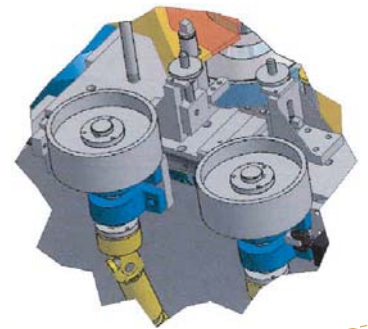
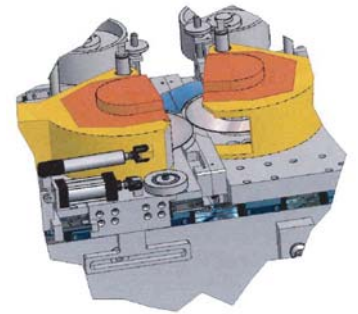
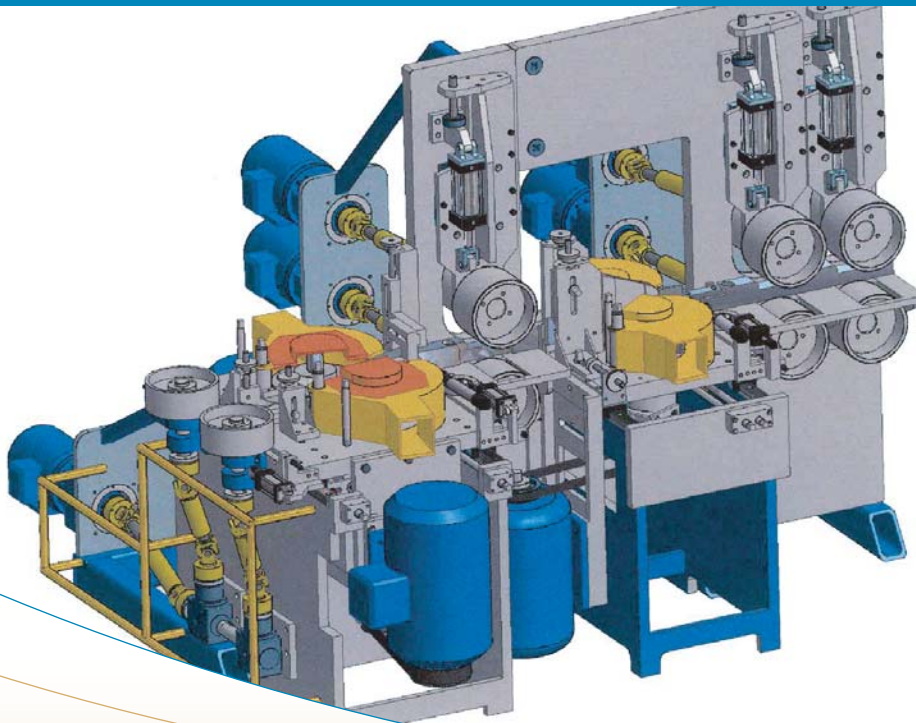




GEMOFOR
FOR A WORLD OF PERFORMANCE

G-2000HV Profiler Splitter



With GEMOFOR's profiler splitter, you can round-up boards' edges without having to plane the board. This is possible due to the location of profiler heads before the saw.

Autonomic and reliable, this equipment answers specialized mills' needs.

Advantages

- General:
 - Screwed modular assembly.
 - Displacement on lineal roll bearing.
 - Screw adjustment and lock.
 - Chromed wear parts.
- Drive:
 - Each roll has its own motor.

Specifications

- Speed from 100 to 1800 ft/minute.
- Two 12" saws mounted on 2 1/8" shaft.
- Two 10" heads mounted on 2 1/8" shaft.
- High-speed shafts on high-precision bearings.
- Top rolls are height adjustable.
- Quick clearance by pneumatic cylinders.
- Saws rotational speed: 6000 RPM.
- Heads rotational speed: 4000 RPM.

Now manufactured and sold by:

CARBOTECH 
INTERNATIONAL

Main Office

2250, rue Saint-Jean
Plessisville (Québec)
Canada G6L 2Y4
Phone: 819 362-6317
Fax: 819 362-6166
info@carbotech-intl.com
www.carbotech-intl.com

Doug Eubanks,

U.S. Corporate manager

518 Grand Point Drive
Hot Spring, AR 71901, USA
Phone: 501 262-2169
Fax: 501 262-4578
Cell.: 501 282-3242
dougaseubanks@earthlink.net